



SPEAKE-MARIN

**2021 June
Partner book**



Workshop	4
History	6
Speake-Marin Values	8
House Commitment	10
Technological Evolution	12
In-House Movements	14
Vintage Movements	16
Former Generation Movements	17
Movement features	18
COLLECTIONS	
Openworked V2	22
New Openworked Dual Time Mint	24
Openworked Dual Time	26
Academic	28
VINTAGE COLLECTION	
New London Chronograph, Valjoux 88	32
London Chronograph, Valjoux 92	34
London Chronograph, Valjoux 72	36
ART SERIES	
New Rhinoceros	38
Dragon	40
HAUTE HORLOGERIE	
New Openworked Tourbillon	42
Openworked Vertical Double Tourbillon	44
Black Vertical Double Tourbillon	46
Vertical Double Tourbillon	47
Sapphire - Tourbillon Minute Repeater Carillon	48
Crazy Skulls - Tourbillon Minute Repeater Carillon	50
EXCLUSIVE BESPOKE SERVICE	
Dials / Case engraving & setting	54
ACCESSORIES	
Straps & Buckles	56
User guide	59
COMMUNICATION	
Corporate identity	60
Advertising / Social media	62
Press releases	64
Events	66
Watch Boxes / Display Material	68



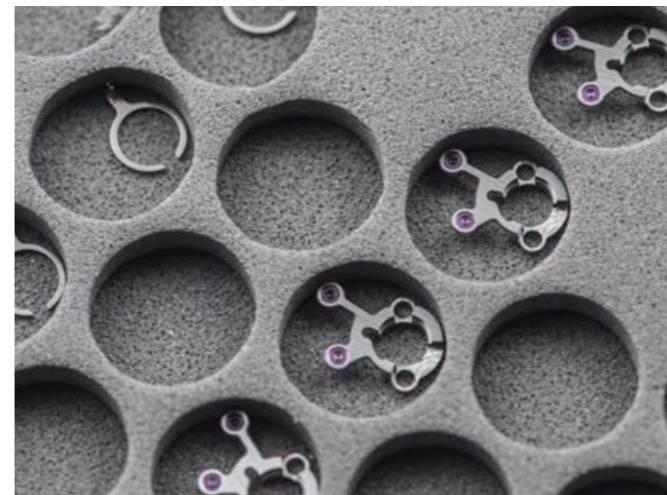
SPEAKE-MARIN SA
Avenue de Miremont 33C
1206, Genève
Switzerland
+41 (0) 21 695 26 55
info@speake-marin.com
www.speake-marin.com



Swiss in the manufacturing till the end of their hands, but British in spirit, our timekeepers are discreet with a subtle touch of humour which appears through a hint of eccentricity: for instance, a movement that plays with time, an animation which catches your attention, a touch of colour which thwarts the conventional codes, a Piccadilly case with distinctive design.



In our workshop near la Chaux-de-Fonds, the Speake-Marin watchmakers build the movements and assemble the watches in a rigorous watchmaking tradition where know-how and excellence are the key words. Timekeepers with a timeless elegance manufactured in very limited editions. Exclusive watches which are unique from the design of the dials to the complexity of the movement.





Speake-Marin creates, develops and assembles innovative timepieces, exclusively equipped with in-house mechanical movements as limited editions or unique pieces only.

Founded in 2002, the fine watchmaking house is based in the heart of Geneva since 2018. It was an obvious choice for Speake-Marin to establish its new head office in Geneva, which represents both the cradle of luxury fine watchmaking and the “city of peace”.

Speake-Marin creates «Belle Horlogerie» collections for those who want to wear a unique watch on their wrist. Speake-Marin finds inspiration for its work in modern architecture and design, reflected in contemporary design for movements and dials, combined with a distinctive classic inspired case. The brand appeals to watch connoisseurs who want to express their style and individuality with an audacious look that distinguishes them from others.



SPEAKE-MARIN VALUES



Freedom

Free spirit is a key driver for Speake-Marin. In terms of creation and entrepreneurship, Speake-Marin doesn't rely on anybody and is free to shape its future in any possible way.



Independence

Speake-Marin is financially independent, which allows the company to make its own choice without any influence from external stakeholders.

SPEAKE-MARIN VALUES



Respect

Speake-Marin pays tribute to Swiss fine watchmaking heritage and respects the traditional know-how. Speake-Marin values all its relations as equal, both internal and external. All external parties are treated as partners and members of the "Speake-Marin family".



Authenticity

Speake-Marin develops and sells authentic, purely "Swiss-made" watches. Both authentic through its products and values, Speake-Marin won't renege on its strong position statement.



Speake-Marin is committed to create "Belle Horlogerie"
– *Beautiful timepieces* –
in respect of the Swiss fine watchmaking heritage.

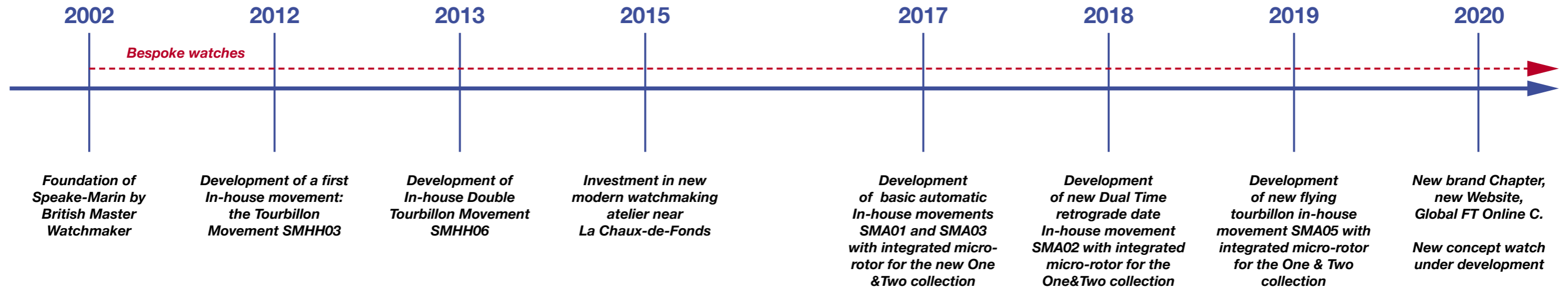
All collections are proposed in
LIMITED EDITIONS ONLY.

All collections house
EXCEPTIONAL MOVEMENTS ONLY.

All creations are
EXCLUSIVE to Speake-Marin.

Speake-Marin is aware of the 21st century's challenges
from an environmental and a social perspectives and
therefore is maximizing efforts to decrease its carbon
foot print, and to impact the society in a positive way.

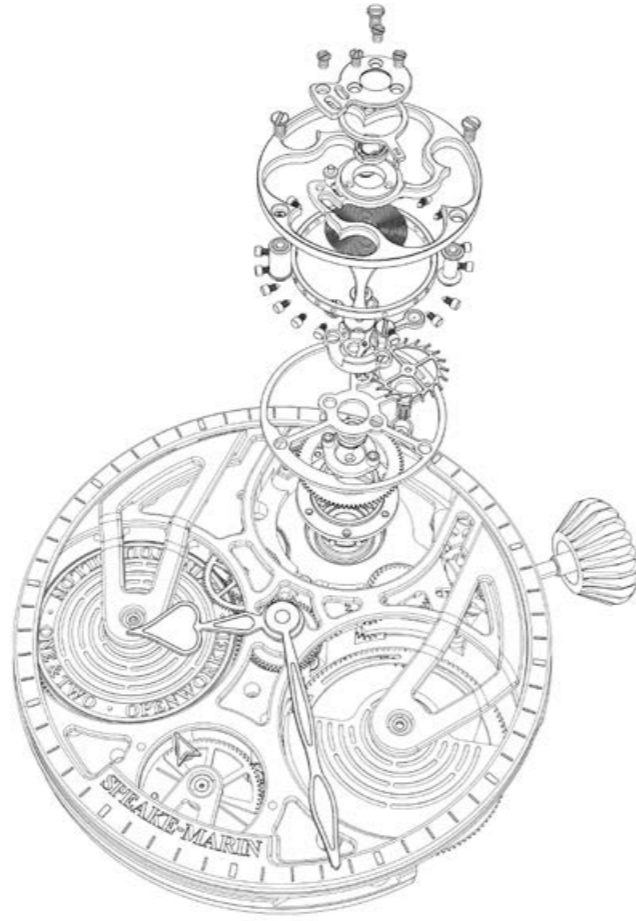






Since 2015, Speake-Marin initiated a movement strategy to fully develop and assemble in-house movements within its atelier in Neuchâtel area, Switzerland.

This new strategy gave birth to the SMA collection, which includes openworked, closed dials and haute horlogerie movements.



SMA-HH06 / Released 2014 / IN-HOUSE



SMA-HH02 / Released 2017 / IN-HOUSE



SMA 01 / Released 2017 / IN-HOUSE



SMA 03 / Released 2018 / IN-HOUSE



SMA 02 / Released 2019 / IN-HOUSE



SMA 05 / Released 2019 / IN-HOUSE



VINTAGE MOVEMENTS



The London Chronograph collection makes vintage iconic movements live again.



Vintage VALJOUX 92 / Released 2016



Vintage VALJOUX 72 / Released 2019



Vintage VALJOUX 88 / Released 2020

FORMER GENERATION MOVEMENTS



FW2012 / Released 2003 / **IN-HOUSE**



SM2 / Released 2009 / **IN-HOUSE**



EROS / Released 2011



SMRT01 / Released 2012



SMA-HH03 / Released 2013 / **IN-HOUSE**



VAUCHER 3002 / Released 2014

MOVEMENT CHARACTERISTICS



Models ...	Openworked HMS	Openworked Dual Time	Academic Art Series	Openworked Tourbillon	Tourbillon Magister	Vertical Double Tourbillon	Minute Repeater Tourbillon
Movement	SMA 01	SMA 02	SMA 03	SMA 05	SMA HH-03	SMA HH-06	SMA HH-02
Casing-diameter	30.00 mm	34.00 mm	30.00 mm	34.00 mm	30.00 mm	38.00 mm	34.40 mm
Height (without hands)	5.00 mm	6.65 mm	3.90 mm	7.15 mm	5.40 mm	8.75 mm	9.80 mm
Kind of winding	Automatic	Automatic	Automatic	Automatic	Automatic	Manual	Manual
Frequency	4 Hz (28'800 A/h)	4 Hz (28'800 A/h)	4 Hz (28'800 A/h)	3 Hz (21'600 A/h)	3 Hz (21'600 A/h)	3 Hz (21'600 A/h)	3 Hz (21'600 A/h)
Power reserve	48 h	48 h	48 h	72 h	72 h	72 h	72 h
Number of jewels	33	36	31	33	25	56	51
Number of components	171	273	147	290	192	402	536
Average rate	Criteria COSC	5 ± 5 s/d	5 ± 5 s/d	4 ± 4 s/d	4 ± 4 s/d	4 ± 4 s/d	4 ± 4 s/d
Winding by the winding-stem	192 turns	192 turns	192 turns	192 turns	33 turns	33 turns	33 turns

MOVEMENT CHARACTERISTICS



Models ...	Resilience Velshda Serpent Calendar	Spirit Wing Commander	Spirit Seafire	London Chronographe	London Chronographe Bronze	London Chronographe Bronze	London Chronographe Titane
Movement	Vaucher 3002	Timeless TL-1024	ETA 7750	Valjoux 92	Valjoux 72	Valjoux 726	Valjoux 88
Casing-diameter	26.60 mm	30.00 mm	30.00 mm	29.50 mm	29.50 mm	29.50 mm	29.50 mm
Height (without hands)	3.70 mm	7.90 mm	7.90 mm	6.00 mm	7.33 mm	7.33 mm	7.33 mm
Kind of winding	Automatic	Automatic	Automatic	Manual	Manual	Manual	Manual
Frequency	4 Hz (28'800 A/h)	4 Hz (28'800 A/h)	4 Hz (28'800 A/h)	2.5 Hz (18'000 A/h)	2.5 Hz (18'000 A/h)	3 Hz (21'600 A/h)	2.5 Hz (18'000 A/h)
Power reserve	50 h	48 h	48 h	39 h	39 h	39 h	44 h
Number of jewels	28	-	25	-	-	-	-
Number of components	193	-	-	-	-	-	-
Winding by the winding-stem	130 turns	40 turns	100 turns	-	-	-	-



COLLECTIONS

Speake-Marin fine watchmaking collections explore different universes and inspirations.

The One & Two collection reinvents fine watchmaking codes with openworked and three-dimensional dials inspired by modern design and architecture.

The London Chronograph collection makes vintage iconic movements live again.

The Art-Series are dedicated to engraving artwork and other art techniques.

The Haute Horlogerie collection is dedicated to high complications.

Last but not least, Speake-Marin goes one step further with its very exclusive on demand service: the Exclusive Bespoke Service.

ONE & TWO COLLECTION



Openworked V2



38Ø Red gold
423807150, 10 pieces



42Ø Red gold
424207150, 10 pieces

LIMITED EDITION
N° 1 to 10



38Ø Titanium
413807150, 19 pieces



42Ø Titanium
414207150, 19 pieces

LIMITED EDITION
OF 38

Movement Calibre SMA01 automatic movement with fully integrated micro-rotor

Power reserve 52 hours

Frequency 28,800 v.p.h / 4Hz

Jewels 33

Functions Central hours, minutes and small seconds

Case New generation Piccadilly case in 18k red gold or titanium (Grade 5). Front and back sapphire crystals treated with anti-reflective coating

Thickness 10.5 mm

Diameter 38 mm and 42 mm

Water resistance 3 bar (30 meters)

Dial Openworked dial
Small seconds at 1.30

Hands Heart-shaped gold coated hands.
Open-heart-shaped white Beluga steel hands

Strap Black alligator.

Buckle 18K red gold pin buckle or titanium folding buckle

ONE & TWO COLLECTION



Openworked Dual Time Mint



38Ø Titanium
413809290, 10 pieces



42Ø Titanium
414209290, 18 pieces

LIMITED EDITION
OF 28

Movement	Calibre SMA02 automatic movement with fully integrated micro-rotor	Thickness	12.35 mm
Power reserve	52 hours	Diameter	38 mm and 42 mm
Frequency	28,800 v.p.h / 4Hz	Water resistance	3 bar (30 meters)
Jewels	36	Dial	Openworked mint finished dial Dual time indication in black and mint Small seconds at 1:30
Functions	Central hours, minutes and small seconds. Retrograde date and Dual Time Indication	Hands	Heart-shaped rhodium plated hands with mint lacquer
Case	New generation Piccadilly case in titanium (Grade 5) with black DLC coating. Front and back sapphire crystals treated with anti-reflective coating	Strap	Mint rubber strap
		Buckle	Pin buckle titanium with black DLC coating

ONE & TWO COLLECTION



Openworked Dual Time



38Ø Red gold
423809250, 20 pieces



42Ø Red gold
424209250, 20 pieces

LIMITED EDITION
OF 20



38Ø Titanium
413809250, 30 pieces



42Ø Titanium
414209250, 30 pieces

LIMITED EDITION
OF 30

Movement	Calibre SMA02 automatic movement with fully integrated micro-rotor
Power reserve	52 hours
Frequency	28,800 v.p.h / 4Hz
Jewels	36
Functions	Central hours, minutes and small seconds. Retrograde date and Dual Time Indication
Case	New generation Piccadilly case in 18k red gold and titanium (Grade 5). Front and back sapphire crystals treated with anti-reflective coating

Thickness	12.35 mm
Diameter	38 mm and 42 mm
Water resistance	3 bar (30 meters)
Dial	Openworked black mat finished dial Dual time indication in black and brown Small seconds at 1.30
Hands	Heart-shaped gold coated or rhodium plated hands with superluminova
Strap	Black alligator.
Buckle	18K red gold pin buckle or titanium folding buckle



Academic



38Ø Titanium
413812010



38Ø Titanium
413812000



38Ø Titanium
413812060



42Ø Titanium
414212010



42Ø Titanium
414212000



42Ø Titanium
414212060

Movement Calibre SMA03 automatic movement with fully integrated micro-rotor.

Power reserve 52 hours

Frequency 28,800 v.p.h / 4Hz

Jewels 31

Functions Central hours, minutes and small seconds

Case New generation Piccadilly case in titanium (Grade 5). Front and back sapphire crystals treated with anti-reflective coating

Quantity Limited Edition of 38

Thickness 10.5 mm

Diameter 38 mm and 42 mm

Water resistance 3 bar (30 meters)

Dial Two levels blue, grey or white dial: polished finish in the middle and mat finish in the outer circle. Small seconds at 1.30

Hands Heart-shaped rhodium-plated hands.

Strap Chocolate, sigaro, argile, magnet light nubuck

Buckle Titanium folding buckle





VINTAGE COLLECTION



Non-Contractual images

London Chronograph / Valjoux 88



42Ø Titanium
514208010, 15 pieces



LIMITED EDITION



42Ø Titanium
514208050, 15 pieces



Movement	Vintage Calibre Valjoux 88, manual winding movement
Power reserve	44 hours
Frequency	18,000 v.p.h / 2.5Hz
Jewels	-
Functions	Hours and Minutes, Triple date, Chronograph, Moon phase
Case	Iconic Piccadilly case in titanium (grade 5) Front and back sapphire crystals treated with anti-reflective coating

Thickness	15.10 mm
Diameter	42 mm
Water resistance	3 bar (30 meters)
Dial	Three-dimensional dial, with two black floating counters, blue and beige indexes. SuperLumiNova® date numerals and the indication of the moon
Hands	Heart-shaped rhodium plated hands with SuperLumiNova®
Strap	Blue or Beige calf leather
Buckle	Folding titanium buckle.



42Ø Titanium
114208030, 14 pieces

LIMITED EDITION



42Ø Titanium
114208010, 14 pieces



Movement	Calibre Valjoux 92, manual winding movement
Power reserve	40 hours
Frequency	18,000 v.p.h / 2.5Hz
Jewels	17
Functions	Chronograph. Central hours, minutes, seconds
Case	Iconic Piccadilly case in titanium (Grade 5).

Thickness	15 mm
Diameter	42 mm
Water resistance	3 bar (30 meters)
Dial	Three-dimensional dial. Chronograph complication: 60 seconds and 45 minute floating counters. Rotating topping tool in the center. Chronograph function in red.
Hands	Heart-shaped blued steel hands
Strap	Striped fabric or blue rubber
Buckle	Stainless steel pin buckle

VINTAGE COLLECTION



Non-Contractual images



London Chronograph / Valjoux 72



42Ø Bronze
594208010, 10 pieces

LIMITED
EDITION



42Ø Bronze
594208060, 10 pieces



Movement	Vintage Calibre Valjoux 72, manual winding movement
Power reserve	40 hours
Frequency	21,600 v.p.h / 3Hz
Jewels	-
Functions	Chronograph. Central hours, minutes, seconds
Case	Iconic Piccadilly case in bronze (alloy of bronze and tin). Front and back sapphire crystals treated with anti-reflective coating

Thickness	15 mm
Diameter	42 mm
Water resistance	3 bar (30 meters)
Dial	Three-dimensional dial. Chronograph complication: 60 seconds, 30 minute and 12 hours floating counters. Rotating topping tool in the center Chronograph function in orange.
Hands	Heart-shaped bronze hands
Strap	Beige calf leather
Buckle	Folding titanium buckle.



38Ø Titanium
413813360, 4 pieces

42Ø Titanium
414213360, 5 pieces

LIMITED EDITION



Movement	Calibre SMA03 automatic movement with micro-rotor.	Thickness	10.5 mm
Power reserve	52 hours	Diameter	42 mm
Frequency	28,800 v.p.h / 4Hz	Water resistance	3 bar (30 meters)
Jewels	31	Dial	Engraved Rhinoceros dial on Black glossy lacquer with rotating topping tool
Functions	Central hours, minutes and small seconds at 1:30	Hands	Heart shaped rhodium-plated hands
Case	New generation Piccadilly case in titanium (Grade 5). Front and back sapphire crystals treated with anti-reflective coating	Strap	Lime tree wood bracelet, interior in natural cork
Quantity	Limited Edition of 9	Buckle	Titanium folding buckle



42Ø Titanium
414206300, 6 pieces



42Ø Titanium
414206310, 6 pieces



42Ø Titanium
414206320, 6 pieces



Movement	Calibre SMA03 automatic movement with micro-rotor.	Thickness	10.5 mm
Power reserve	52 hours	Diameter	42 mm
Frequency	28,800 v.p.h / 4Hz	Water resistance	3 bar (30 meters)
Jewels	31	Dial	Three dimensional engraved dial Small seconds at 1.30 Rotating topping tool 5N Dragon with grey, golden or red lacquer background.
Functions	Central hours, minutes and small seconds	Hands	Heart shaped rhodium-plated hands
Case	New generation Piccadilly case in titanium (Grade 5). Front and back sapphire crystals treated with anti-reflective coating	Strap	Black alligator
Quantity	Limited Edition of 18	Buckle	Titanium folding buckle



38Ø Red gold
423811250, 5 pieces



42Ø Red gold
424211250, 5 pieces

LIMITED EDITION
OF 10



38Ø Titanium
413811250, 5 pieces



42Ø Titanium
414211250, 5 pieces



LIMITED EDITION
OF 10

Movement Calibre SMA05 automatic movement with fully integrated micro-rotor. 60 sec Flying Tourbillon

Power reserve 72 hours

Frequency 21,600 v.p.h / 3Hz

Jewels 33

Functions Central hours, minutes with power reserve.

Case New generation Piccadilly case in 18k red gold and titanium (Grade 5). Front and back sapphire crystals treated with anti-reflective coating

Thickness 12.35 mm

Diameter 38 mm and 42 mm

Water resistance 3 bar (30 meters)

Dial Openworked dial. Black microblasted mat finish. Black plated bridge flanks

Hands Heart-shaped gold coated or rhodium plated hands with Superluminova

Strap Black alligator

Buckle 18K red gold pin buckle or titanium folding buckle



Openworked Vertical Double Tourbillon



Openworked Vertical Double Tourbillon



46Ø White gold
934681150



Movement	Calibre SMA-HH06, manual winding vertical double tourbillon movement. Openworked movement. <u>Patented rate equalizer</u>	Thickness	14.3 mm
Power reserve	70 hours	Diameter	46 mm
Frequency	21,600 v.p.h / 3Hz	Water resistance	3 bar (30 meters)
Jewels	56	Dial	Openworked black floating dial with step effect
Functions	Off set hours, minutes with power reserve and day/night indicators	Hands	Heart-shaped rhodium plated hands
Case	Iconic Piccadilly case in white gold. Front and back sapphire crystals treated with anti-reflective coating	Strap	Black alligator
		Buckle	18k white gold pin buckle

Black Vertical Double Tourbillon



46Ø White gold
10053



Movement	Calibre SMA-HH06, manual winding vertical double tourbillon movement. <u>Patented rate equalizer</u> . Black plate and rhodium-plated discs and bridges.
Power reserve	70 hours
Frequency	21,600 v.p.h / 3Hz
Jewels	56
Functions	Off set hours, minutes with power reserve and day/night indicators
Case	Iconic Piccadilly case in 18K white gold. Front and back sapphire crystals treated with anti-reflective coating

Thickness	14.3 mm
Diameter	46 mm
Water resistance	3 bar (30 meters)
Dial	Oven-fired, white enamel dial
Hands	Heart-shaped blued steel hands
Strap	Black alligator
Buckle	18K white gold pin buckle

Double Vertical Tourbillon



46Ø White gold
10054



Movement	Calibre SMA-HH06, manual winding vertical double tourbillon movement. <u>Patented rate equalizer</u> . Rhodium-plated plate and black discs and bridges.
Power reserve	70 hours
Frequency	21,600 v.p.h / 3Hz
Jewels	56
Functions	Offset hours, minutes with power reserve and day/night indicators
Case	Iconic Piccadilly case in 18K white gold. Front and back sapphire crystals treated with anti-reflective coating

Thickness	14.3 mm
Diameter	46 mm
Water resistance	3 bar (30 meters)
Dial	Oven-fired, white enamel dial
Hands	Heart-shaped blued steel hands
Strap	Black alligator
Buckle	18K white gold pin buckle



Sapphire - Tourbillon Minute Repeater Carillon



Sapphire - Tourbillon Minute Repeater Carillon

Non-Contractual images

- Closed -



46.4Ø Sapphire
974280400



Movement	Calibre SMA-HH02, 60 seconds flying tourbillon. Skeletonized. <u>Patented safety module</u> . Manual winding movement	Thickness	17mm
Functions	Carillon minute repeater. Central hours and minutes.	Diameter	46.4 mm
Power reserve	72 hours	Water resistance	3 bar (30 meters)
Frequency	21.600 v.p.h / 3Hz	Dial	Skeletonized dial with big red XII figure dis-integration module.
Case	Full Sapphire crystal case: bezel, watch case, back and shoulders.	Hands	Heart-shaped blue steel hands
Remark	Bespoke project on request	Strap	On demand
		Buckle	Titanium folding buckle



Crazy Skulls - Tourbillon Minute Repeater Carillon



Crazy Skulls - Tourbillon Minute Repeater Carillon

Non-Contractual images

- Closed -

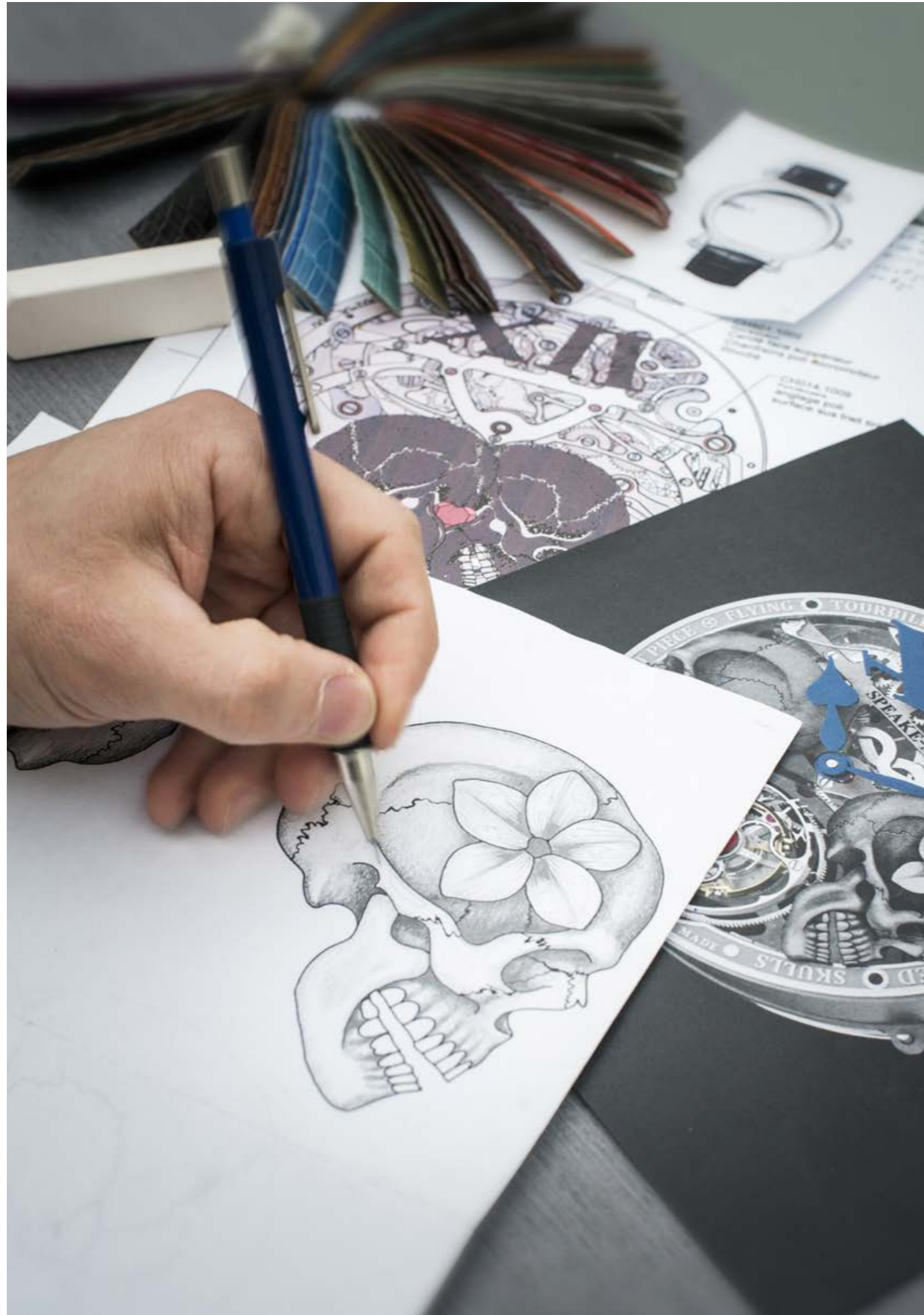


- Open -



42Ø Titanium / Platinum
974280200

Movement	Calibre SMA-HH02, 60 seconds flying tourbillon. Skeletonized. <u>Patented safety module</u> . Manual winding movement	Thickness	16 mm
Functions	Carillon minute repeater. Central hours and minutes.	Diameter	42 mm
Power reserve	72 hours	Water resistance	3 bar (30 meters)
Frequency	21.600 v.p.h / 3Hz	Dial	Skeletonized dial with two hand-engraved skulls. Big index at 12. Minute repeater with exclusive double animation of the dial
Case	Piccadilly shoulders and central case, titanium. Platinum bezel and sapphire case-back. Front sapphire crystals treated with anti-reflective coating.	Hands	Heart-shaped blue steel hands
		Strap	Black alligator
		Buckle	Titanium folding buckle



EXCLUSIVE BESPOKE SERVICE

Speake-Marin at your service to create and develop unique timepieces or limited editions on demand.

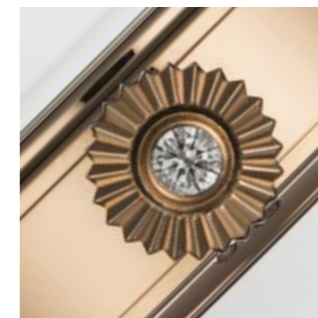
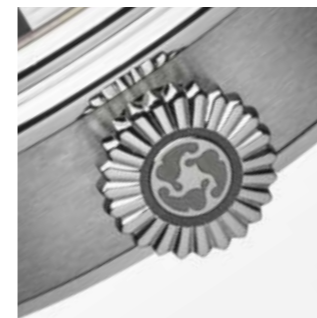
- Benefit from a free internal design service
- Choose the material (Gold, Titanium) and the case size (38 mm or 42 mm)
 - Choose your case finish (treatment & engraving)
 - Enjoy the new Speake-Marin in-house movements
- Choose your movement finishing (customization, engraving etc...)
 - Choose your dial according to your wishes
 - Choose your custom made bracelet
- Delivery: depending on the complexity of the project, between 4 and 12 months upon receipt of your order confirmation



Special creations - Dials



Special creations - Case engraving & setting



ACCESSORIES



Straps & Buckles



40 000 Folding buckle
Not adjustable to rubber straps

40 001 Red gold pin buckle

40 002 White gold pin buckle
40 003 Stainless steel pin buckle

All watches are delivered with Medium size straps.
All straps are available in Small, Medium and Large sizes. Except rubber straps.



20 000 Black alligator



20 001 Brown alligator



22 000 Black rubber



20 002 Blue alligator



22 002 Blue rubber



22 004 Brown rubber



22003 Orange rubber



22001 White rubber



21 004 Sigaro Nubuck



22005 Red rubber



21 005 Argile Nubuck



21 0006 Magnet light Nubuck



24 000 Natural Nubuck

To be downloaded from our website:
<http://www.speake-marin.com/user-guide>

The collage features several digital assets:

- Website Landing Page:** A dark blue page with the 'SPEAKE-MARIN' logo at the top right. The main heading is 'ONE & TWO OPENWORKED TOURBILLON' with a 'Discover' button below it. A large image of the watch is on the right, and a 'COLLECTIONS' menu is in the top right corner.
- User Guide Menu:** A white page titled 'USER GUIDE' with a grid of watch images and their respective categories:
 - Haute-Horlogerie Openworked Tourbillon (with a 'DOWNLOAD' button)
 - One&Two Collection Openworked Dual Time
 - One&Two Collection Academic Full Moon
 - Vintage Collection
 - Haute Ho...
- Instruction Manual Page:** A white page titled 'The HAUTE HORLOGERIE collection ONE & TWO OPENWORKED TOURBILLON How to use your watch'. It includes a diagram of the watch crown and two numbered instructions:
 - 1. Neutral and winding position:** Allows the user to manually wind their watch by turning the crown upwards.
 - 2. Time setting position:** Allows the user to set the time by turning the crown and turning the hands to the right time.
 It also contains a 'WATCH SETTING' section with a diagram of the crown in two positions (a and b) and a 'CAUTION' section: 'Every time you change the time, remember to put the crown back in position 1.' and a 'WARNING' section: 'Your watch is guaranteed water-resistant to 2 bars (20 m) provided the crown is placed back in position 1.'

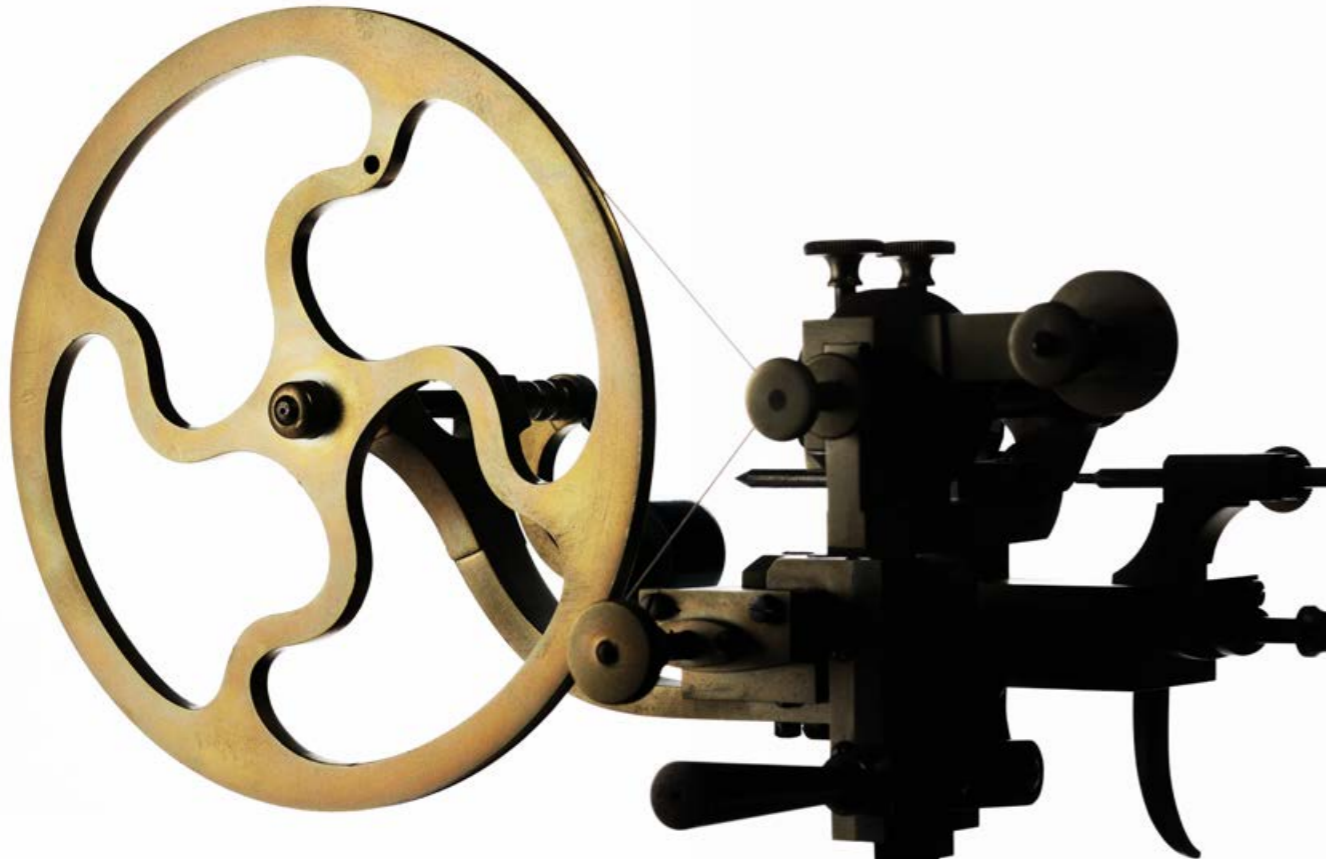


COMMUNICATION

For any request contact:

anne@speake-marin.com
or
elodie@speake-marin.com

The design of the Speake-Marin Logo was inspired by the topping tool which is a tool used to alter the profile of the teeth of the wheels.



CORPORATE IDENTITY

LOGO

Please use the simplified logo for all your communication. If you don't have it, do not hesitate to contact our communication department.



SPEAKE-MARIN



SPEAKE-MARIN



SPEAKE-MARIN



SPEAKE-MARIN

PANTONE

The two main colours of Speake-Marin are brown and blue. To avoid all confusion, we defined the Pantone. We wish to create a strong identity and be recognised easily. Please use these two colours for all your communication.

PANTONE 7518C
C: 38% M: 58% J: 55% N: 47%

PANTONE 286C
C: 100% M: 79% J: 16% N: 3%



All Speake-Marin advertising must be validated by Speake-Marin. So as to prepare the advertising material, could you please send us 1 week before the deadline all the needed information: spec tech, vehicle, format.





All press releases are sent by e-mail to the press. Besides, these press kits are available on our website at any time, without restriction on : www.speake-marin.com/press.



Should you need us for your invitations, do not hesitate to request help. We will help you to create an invitation in line with your event and our corporate identity.



Would you produce your invitation by yourself, please kindly send it to us for validation.



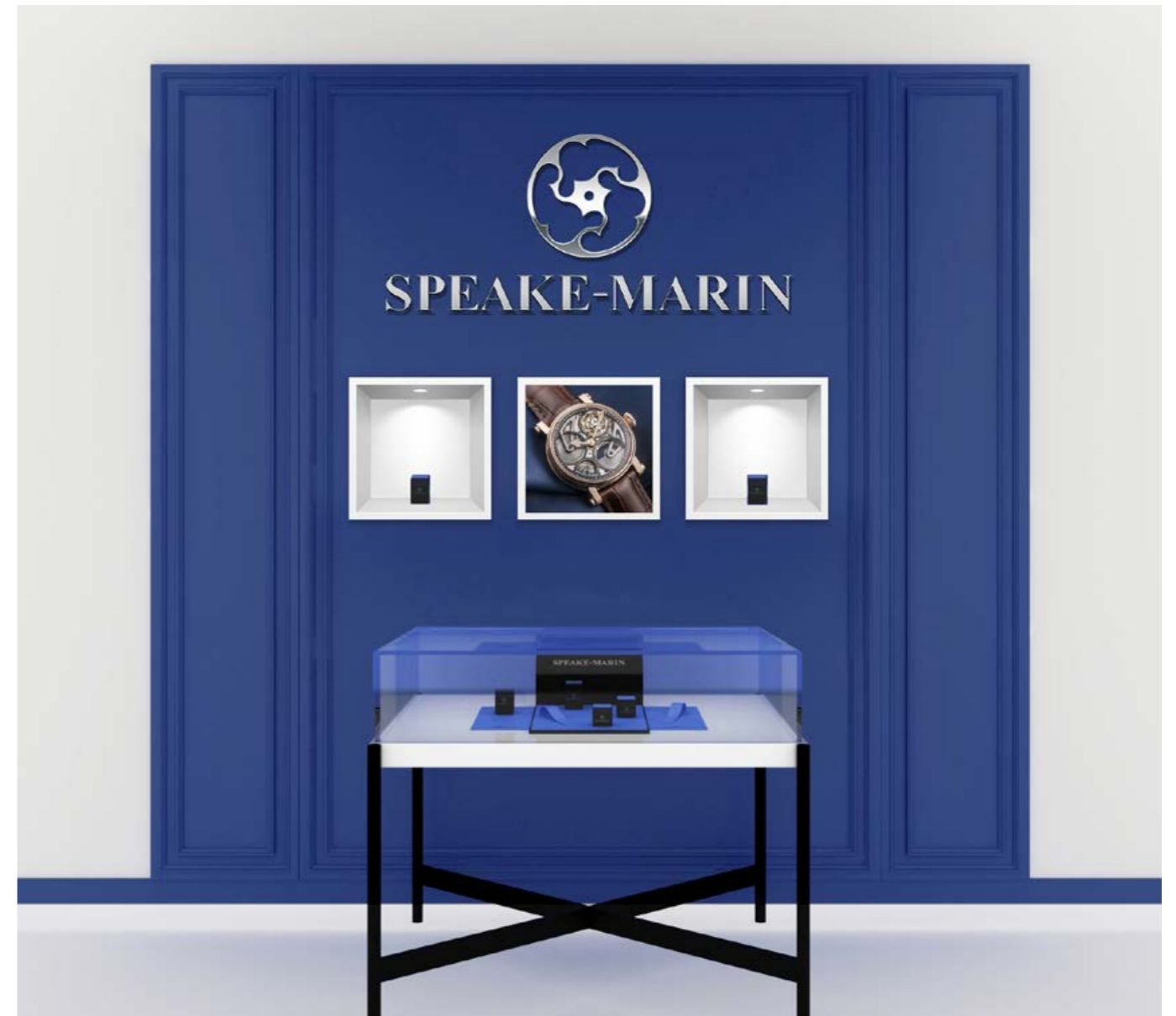
EVENTS - Dinner or Cocktail

Our colour is brown with a hint of blue. Please use our corporate colours accordingly.

For example: a brown tablecloth with blue flowers or blue glasses.



EVENTS - Exhibition



BOOTH OR CONSTRUCTION.

As much as possible, use our colours and make our logo visible.
Do not hesitate to contact us if you need to produce stickers or visuals.

GIFT

The customer gift is an erasable Note Book. We are ready to provide them for your events, exhibitions, training sessions.

If you decide to produce your own gift for one of your events, please send us the project for validation.

WATCH BOXES

Warranty card

Shopping bag

Blue pouch

Piano watch box for Haute Horlogerie only



DISPLAY MATERIAL

Please use Speake-marin display material only. Our displays are part of our corporate identity and reinforce our message.



Gloves

Watch tray



Display material for counter



Display material for window



SPEAKE-MARIN



SPEAKE-MARIN SA
Avenue de Miremont 33C
1206, Genève
Switzerland
+41 (0) 21 695 26 55
info@speake-marin.com
www.speake-marin.com